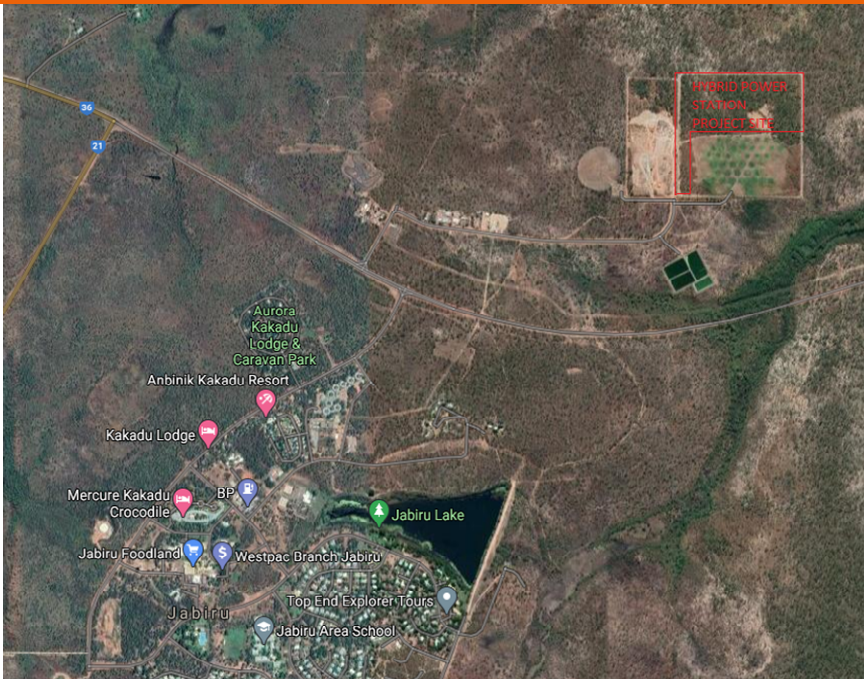


1. Application Summary:

Information Required	Response from EDL
A1. Type of Licence Applied for	Generation Licence in relation to a new generator seeking to generate electricity for sale to the retailers in the Northern Territory
A2. Proposed Date the applicant seeks to have the licence issued (please note the commission does not undertake to issue the licence by date)	The Generation Licence is requested as soon as practicable
A3. Proposed Term of Licence	The Generation Licence is requested for an indefinite period
A4. Detail Summary of the proposed operation	<p>EDL will build, own and operate the Jabiru Hybrid Renewable Project to supply power to the remote, off-grid Northern Territory town of Jabiru:</p> <ul style="list-style-type: none"> • Located at Elsherana Road, Jabiru, NT, 0886 • 11.4MW of installed generation capacity, comprising: <ul style="list-style-type: none"> ○ 4.5MW total capacity of five (5) x Diesel generators ○ 3.9MW solar capacity ○ 3MW/5MWh battery • Once complete, Jabiru power station will provide at least 50% renewable energy over the long term • Connected to the Power and Water Corporation electricity network <p>The Manning and Monitoring Philosophy:</p> <ul style="list-style-type: none"> • Manned on day shift between approximately 7am and 4pm 365 days per year • Outside of these hours, staff are available on call-out basis for emergency response • Remotely operated and monitored from Energy Developments Integrated Remote Operations Centres (IROC) in Brisbane and Perth 24 / 7

Information Required	Response from EDL
	<ul style="list-style-type: none"> ○ Remote operation and monitoring is designed to provide immediate responsiveness to generation requests and operational adjustments on a 24/7 basis <p>The Maintenance Philosophy:</p> <ul style="list-style-type: none"> • Maintenance is scheduled by our centralised maintenance team co-located within the IROC • Maintenance is performed by on-site personal and supported by a roving maintenance team to support major maintenance <p>Facilities – Jabiru Generation Output Philosophy:</p> <ul style="list-style-type: none"> • Power station generation output is intended to provide baseload and load following peak generation capacity • Once complete, Jabiru power station will provide at least 50% renewable energy over the long term
A5. Geographical area where the operation is proposed	Located at Elsherana Road, Jabiru, NT, 0886. Please see below the site location:

Information Required	Response from EDL
	
<p>A6. Evidence of the status of other essential regulatory approvals required for the operation</p>	<p><u>Confidential</u> <i>Withheld from this publicly available version of EDL Jabiru Pty Ltd's Generation Licence application</i></p>

2. Corporate Information

Information Required	Response from EDL	
B1. Full Legal Name of the Applicant (this should match the relevant Access Agreement with the network provider)	EDL Jabiru Pty Ltd (previously called EDL Operations (Highbury) Pty Ltd) (EDL Jabiru)	
B2. ABN/ACN	ABN 81 062 117 819; ACN 062 117 819	
B3. Registration Jurisdiction	Registered in Victoria 23 Nov 1993; Current registered office Level 6, 1 Eagle Street, Brisbane QLD 4000	
B4. Certificate of registration of the company	Please refer to the attached company extract at Appendix A	
B5. Name and Title of a nominated and alternative contact officer on behalf of the applicant	Primary Contact Name Neil Duffy Commercial Manager Remote Energy	Alternative Contact Details Michelle Thomas Senior Commercial Analyst
B6. Telephone	<u>Confidential</u> <i>Withheld from this publicly available version of EDL Jabiru Pty Ltd's Generation Licence application</i>	<u>Confidential</u> <i>Withheld from this publicly available version of EDL Jabiru Pty Ltd's Generation Licence application</i>
B7. Email	<u>Confidential</u> <i>Withheld from this publicly available version of EDL Jabiru Pty Ltd's Generation Licence application</i>	<u>Confidential</u> <i>Withheld from this publicly available version of EDL Jabiru Pty Ltd's Generation Licence application</i>
B8. Postal Address	<u>Confidential</u> <i>Withheld from this publicly available version of EDL Jabiru Pty Ltd's Generation Licence application</i>	<u>Confidential</u> <i>Withheld from this publicly available version of EDL Jabiru Pty Ltd's Generation Licence application</i>
B9. Physical Address	<u>Confidential</u>	<u>Confidential</u>

Information Required	Response from EDL	
	<i>Withheld from this publicly available version of EDL Jabiru Pty Ltd's Generation Licence application</i>	<i>Withheld from this publicly available version of EDL Jabiru Pty Ltd's Generation Licence application</i>
B10. Key Office Holders, to include directors and senior management	Sole Director: Mr James Christopher Harman Company Secretary: Mr Glen Elliott Marshall General Manager Remote Energy: Mr Geoff Hobley	
B11. Major Shareholders	EDL Jabiru is a wholly-owned subsidiary of EDL Holdings (Australia) Pty Ltd ABN 67 058 224 481 (EDL Holdings), which is in turn a wholly-owned subsidiary of Energy Developments Pty Limited (EDL) (being the parent company for the EDL Group).	
B12. Summary of the corporate structure, associated entities and ownership structure if relevant	<u>Confidential</u> <i>Withheld from this publicly available version of EDL Jabiru Pty Ltd's Generation Licence application</i>	
B13. Description of the organisations' core activities	EDL's core business is the operation of a global portfolio of power stations in Australia, the United Kingdom, Europe, Canada and the United States. We are committed to: <ul style="list-style-type: none"> • implementing smart energy solutions; • growing our portfolio of renewable energy projects in our areas of operation; • establishing renewable hybrid technologies for the supply of electricity to off-grid locations; • generating electricity from waste coal mine gas and landfill gas; and • delivering tailored LNG and CNG solutions. EDL has been operating in the power generation sector for over 30 years and has the business skills, knowledge, personnel, systems and ability to operate within the electricity sector in all of the Australian mainland states. A key focus for EDL is the generation of electricity for supply to customers in remote areas outside of the main electricity networks.	
B14. Evidence the applicant is a resident of Australia	Please refer attached company search in Appendix B.	

Information Required	Response from EDL
B15. Evidence the applicant has the capacity to be sued in their own name in an Australian court	<p>As EDL Jabiru is a corporation registered under the Corporations Act 2001 (Cth), it has the powers of both a person and a body corporate (including the capacity to sue and be sued). As shown in the attached company search, EDL Jabiru is currently registered and not subject to external administration. Please refer attached company search in Appendix B.</p> <p>Additional Information: EDL can confirm the following:</p> <ul style="list-style-type: none"> • No enforcement actions or enforceable undertakings against Directors over past 10 years • No relevant licences have previously been revoked • No past or present administrative or legal actions in relation to an authorisation or license in any industry • Directors have no unspent criminal convictions
B16. Evidence the applicant is not under external administration	<p>As EDL Jabiru is a corporation registered under the Corporations Act 2001 (Cth), it has the powers of both a person and a body corporate (including the capacity to sue and be sued). As shown in the attached company search, EDL Jabiru is currently registered and not subject to external administration. Please refer attached company search in Appendix B.</p> <p>Additional Information: EDL can confirm the following:</p> <ul style="list-style-type: none"> • No enforcement actions or enforceable undertakings against Directors over past 10 years • No relevant licences have previously been revoked • No past or present administrative or legal actions in relation to an authorisation or license in any industry • Directors have no unspent criminal convictions.
B17. Existing Operations in the electricity supply industry	<p>The EDL Group is engaged in the development, ownership and operation of remote power generation, low greenhouse gas emission power generation and renewable energy solutions in Australia, the United Kingdom, Europe, Canada and the United States, with a portfolio of over 1 GW from 97 separate power stations.</p>

Information Required	Response from EDL
	<p>In the Northern Territory electricity supply industry, the EDL Group has successfully operated the Pine Creek Power Station (commissioned: 1989), the McArthur River Power Station on behalf of Glencore (commissioned: 1995) and the Yulara Compressed Natural Gas (CNG) virtual pipeline project on behalf of PowerWater (commissioned: 2006).</p>
<p>B18. Authorisations held in other jurisdiction</p>	<p>The EDL Group has the following electricity generation licences in Australia:</p> <ul style="list-style-type: none"> • Northern Territory <ul style="list-style-type: none"> ○ Generation Licence held by EDL NGD (NT) Pty Ltd for the Pine Creek Power Station; ○ Special Licence (Independent Power Producer) held by EDL NGD (NT) Pty Ltd for the McArthur River Power Station; • Queensland <ul style="list-style-type: none"> ○ Generation Licence held by EDL CSM (QLD) Pty Ltd for the German Creek Power Station; ○ Generation Licence for EDL Projects (Australia) Pty Ltd for the Moranbah North Power Station and the Grosvenor Power Station; ○ Generation Licence for EDL LFG (Qld) Pty Ltd for the Browns Plains Power Station; ○ Special Approval held by EDL NGD (Qld) Pty Ltd for the Cannington Power Station • Victoria <ul style="list-style-type: none"> ○ Generation Licence held by EDL LFG (Vic) Pty Ltd for its Victorian power stations; • South Australia <ul style="list-style-type: none"> ○ Generation Licence held by EDL Group Operations Pty Ltd for the Wingfield I and II Power Stations; ○ Generation Licence held by Energy Generation Pty Ltd for the Coober Pedy Power Station • Western Australia

Information Required	Response from EDL
	<ul style="list-style-type: none"> ○ Electricity Integrated Regional Licence held by EDL NGD (WA) Pty Ltd to operate generating works for the purpose of supplying electricity to customers otherwise than through the South West Interconnected System.

3. Financial Information

Information Area	Response from EDL
C1. Most recent audited financial reports	EDL Jabiru Pty Ltd does not have stand alone Audited Financial Reports but consolidated financial reports (including for EDL Jabiru Pty Ltd) for last 3 years are attached per C3 below.
C2. For new entities, detailed cash flow analysis for five year based on projected sales scenarios, including details of the assumptions, information source/s and customer analysis underlying the scenarios	<u>Confidential</u> <i>Withheld from this publicly available version of EDL Jabiru Pty Ltd's Generation Licence application</i>
C3. Where the applicant is a subsidiary company, audited financial reports for the parent company	<u>Confidential</u> <i>Withheld from this publicly available version of EDL Jabiru Pty Ltd's Generation Licence application</i>
C4. Copies of any information submitted to ASIC under chapter 2M of the Corporations Act 2001 over the past three years	EDL Jabiru Pty Ltd was a dormant entity (formerly named 'EDL Operations (Highbury) Pty Ltd') and was not actively carrying on operations over the past three years until it entered into the agreements with the NTG in February 2021. As such, no filings have been made under 2M of the Corporations Act for the last three years.
C5. Evidence the applicant is able to finance the assets and investment necessary to undertake the licensed activities	<u>Confidential</u> <i>Withheld from this publicly available version of EDL Jabiru Pty Ltd's Generation Licence application</i>
C6. Projected revenue and expenditure figures for at least five years	<u>Confidential</u> <i>Withheld from this publicly available version of EDL Jabiru Pty Ltd's Generation Licence application</i>
C7. Information about assumptions, risks and the risk management strategies	<u>Confidential</u> <i>Withheld from this publicly available version of EDL Jabiru Pty Ltd's Generation Licence application</i>

Information Area	Response from EDL
<p>C8. For retail licences the applicant is to provide documentary evidence the applicant has the necessary financial capability to discharge all financial obligations to the suppliers of wholesale electricity, network access services and metering services that would arise from the reasonably expected sale of electricity by the applicant. This is to include an investment grade credit rating for long-term unsecured counterparty obligations or evidence the applicant has entered into arrangements with a financial institution capable of providing suppliers with acceptable security in the form of a bank guarantee (or an equivalent facility)</p>	<p>EDL is applying for a generator licence only</p>

4. Technical information

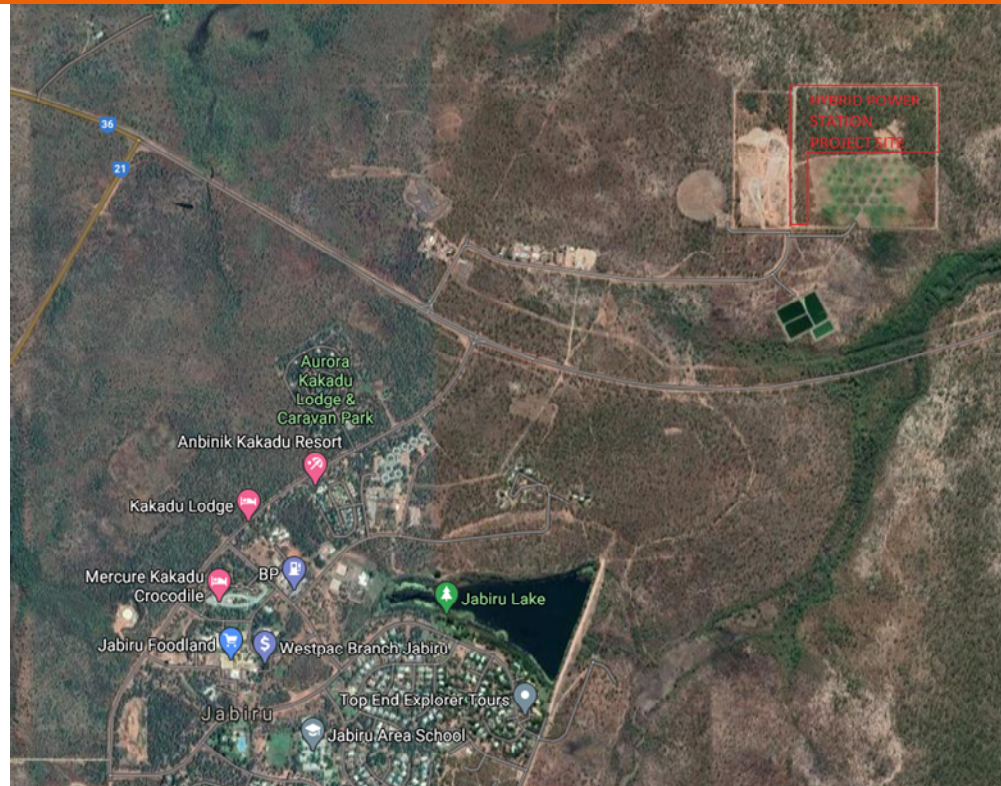
Information Area	Response from EDL
D1. The applicant must identify all of the relevant licence and legislative requirements and show they have the technical capacity to comply with these requirements	<p><u>Confidential</u></p> <p><i>Withheld from this publicly available version of EDL Jabiru Pty Ltd's Generation Licence application</i></p>
D2. Experience and knowledge of the electricity supply industry	<p>The EDL Group has a detailed knowledge of the electricity supply industries in the Northern Territory, Australia, North America and parts of Europe through its 30+ years of operation in the power generation sector. As such, it has the business skills, knowledge, personnel, systems and ability to operate within the electricity sector in all mainland states of Australia.</p> <p>It:</p> <ul style="list-style-type: none"> • generates and sells electricity direct to customers including major miners and utilities in Queensland, New South Wales, Victoria, South Australia, Western Australia and the Northern Territory; • generates electricity for sale in the National Electricity Market in Queensland, New South Wales, Victoria and South Australia; and • provides end-to-end generation solutions including Liquefied Natural Gas (LNG) and Compressed Natural Gas (CNG) compression and transportation in Western Australia and the Northern Territory. <p>A key focus for the EDL Group is the sale of electricity directly to customers in remote areas outside of the NEM. The Jabiru Power Station and the requested Generation Licence will support the planned development of this aspect of the business.</p>
D3. Summary of the human resources available to the proposed operation	<p><u>Confidential</u></p> <p><i>Withheld from this publicly available version of EDL Jabiru Pty Ltd's Generation Licence application</i></p>
D4. Summary of the skills and experience of the directors and senior managers	<p><i>James Harman (Sole Director and Chief Executive Officer) LLM</i></p>

Information Area	Response from EDL
	<p>James was appointed Chief Executive Officer of EDL in October 2016. A highly experienced global executive, for nearly two decades before joining EDL, James held senior executive positions with top tier mining companies in Europe and Australia.</p> <p><i>Shane McLaughlin (Chief Operating Officer) MBA</i> Shane joined EDL in March 2007 and was appointed Chief Operating Officer in February 2017. An experienced project manager and operations leader for 37 years, Shane has worked in electricity distribution, transmission, power generation, retail, construction and operations throughout Australia, UK and the USA.</p> <p><i>Susan Marrinan (Chief Financial Officer) CA</i> Susan joined EDL as Chief Financial Officer in October 2017. An experienced senior Finance Executive for approximately 25 years, Susan has held a number of finance and corporate development roles with Rio Tinto, Atlantic Richfield, Shell and Anglo American.</p> <p><i>Glen Marshall (Company Secretary) Bus (Acc), LLB, LLM</i> Glen has worked for the Company as Legal Counsel since 2003 and was appointed Company Secretary in January 2008. Glen has previously worked at various legal firms in Australia and overseas, covering a broad range of corporate, commercial and project work in various sectors.</p> <p><i>Geoff Hobley (General Manager Remote Energy) MBA</i> Geoff Hobley joined EDL in 2012 and is responsible for managing the Remote Energy business. Prior to working with EDL, Geoff held various roles working in Western Australian and national energy markets for Alinta, including Manager Wholesale, Manager Sales and Executive General Manager Alinta Pty Ltd (Gas and Electricity retail business in WA).</p>
<p>D5. If the applicant is to rely on another entity to provide staff and resources, a summary of the relationship between the applicant and this entity, including any formal agreements to provide services, and a summary of this other entity's experience in and knowledge of the</p>	<p><u>Confidential</u> <i>Withheld from this publicly available version of EDL Jabiru Pty Ltd's Generation Licence application</i></p>

Information Area	Response from EDL
electricity supply industry, and technical capacity to meet relevant requirements of the licence.	
D6. Evidence that negotiation of relevant agreements necessary to undertake electricity operations in the Northern Territory (for example, network access/generator user agreement, power purchase agreements, provision of standby agreements) is well advanced and no substantive issues have been identified that would stop such agreements being executed	<p><u>Confidential</u></p> <p><i>Withheld from this publicly available version of EDL Jabiru Pty Ltd's Generation Licence application</i></p>
D7. Description of the physical environment of the proposed operation and its immediate vicinity	<p>The proposed EDL Jabiru power station is to be located at Elsherana Road, Jabiru NT 0886. This is on the other side of the Arnhem Highway from the Jabiru township, and is approximately 2 km from that township. The Jabiru Power Station will be located adjacent to the existing Jabiru landfill. The location is illustrated in the aerial photograph set out below.</p>

Information Area

Response from EDL



D8. Description of the supply infrastructure and interconnected infrastructure systems

The Jabiru Power Station will comprise 11.4 MW of installed generation capacity, as follows:

- solar photovoltaic panels and inverters (total capacity 3.9 MW)
- battery (total capacity 3 MW/5 MWh)
- 5 x 0.9 MW diesel generating units (total capacity 4.5 MW)

Information Area	Response from EDL
	The Jabiru Power Station will be connected to PWC's electricity distribution network through 2 x 11 kV connection points located within a PWC substation at the Jabiru Power Station site. From there, PWC will distribute the electricity to the Jabiru township.
D9. Construction schedule (where applicable)	<u>Confidential</u> <i>Withheld from this publicly available version of EDL Jabiru Pty Ltd's Generation Licence application</i>

5. Exemption

Information Area	Response from EDL
E1. Details and justification for any exemption sought	EDL Jabiru is not seeking to avail itself of any regulatory exemptions or modifications in respect of the obligation to obtain a generation licence for the operation of the Jabiru Power Station.

6. Licence conditions

Information Area	Response from EDL
Details and justification for any specific licence conditions sought	<u>Confidential</u> <i>Withheld from this publicly available version of EDL Jabiru Pty Ltd's Generation Licence application</i>

Appendix A – CONFIDENTIAL

Appendix B – Company Search



Australian Company

EDL JABIRU PTY LTD
ACN 062 117 819

Extracted from ASIC's database at AEST 15:27:60 on 24/05/2021

Company Summary	
Name:	EDL JABIRU PTY LTD
ACN:	062 117 819
ABN:	81 062 117 819
Registration Date:	23/11/1993
Next Review Date:	31/05/2021
Former Name(s):	EDL OPERATIONS (HIGHBURY) PTY LTD, RAFJO PTY. LTD.
Status:	Registered
Type:	Australian Proprietary Company, Limited By Shares
Locality of Registered Office:	BRISBANE QLD 4000
Regulator:	Australian Securities & Investments Commission

Further information relating to this organisation may be purchased from ASIC.